



User Manual

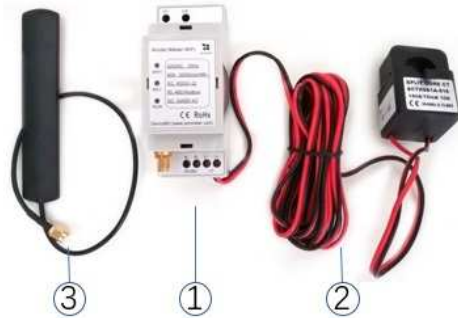
Wi-Fi Energy Meter (WEM3162)



FEB, 2017

1. Hardware Introduction

Hardware Appearance



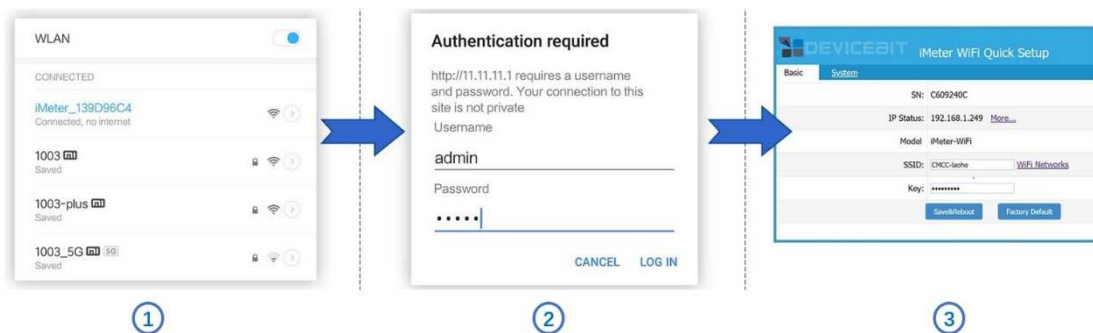
After iMeter Installed



Standard Inclusion:

No.	Item	Qty	Remark
1	Wi-Fi Energy Meter	1	Wi-Fi module embedded
2	Split-Core CT (Current Transformer)	1	60A or 250A optional
3	2.4G Antenna	1	

2. WiFi Setup



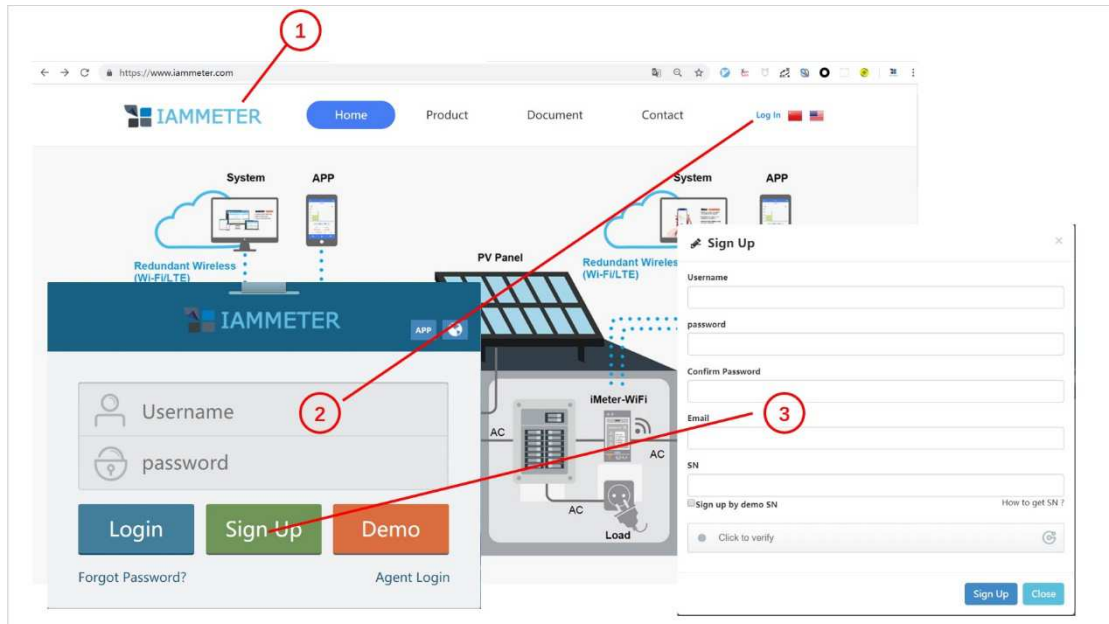
Step1, Use your smart device's Wi-Fi connection setup, connect to the iMeter's network, which will show up as iMeter_XXXXXXXX (XXXXXXXX is unique device SN). No password required.

Step2, Whilst connected to the iMeter's network, open a web browser and navigate to <http://11.11.11.1>; Enter the username "admin" and password "admin".

Step3, Connect to home router by clicking "WiFi Networks" or manually input home router's SSID (your home Wi-Fi networks' SSID) and Key (your home Wi-Fi networks' password) and then click "Save&Reboot"

3. Monitor on DeviceBit Cloud

3.1 Sign up



Step1, Visit the dedicated web portal for temperature and humidity monitoring: <https://www.iammeter.com>, click "Log in", and the login page is shown

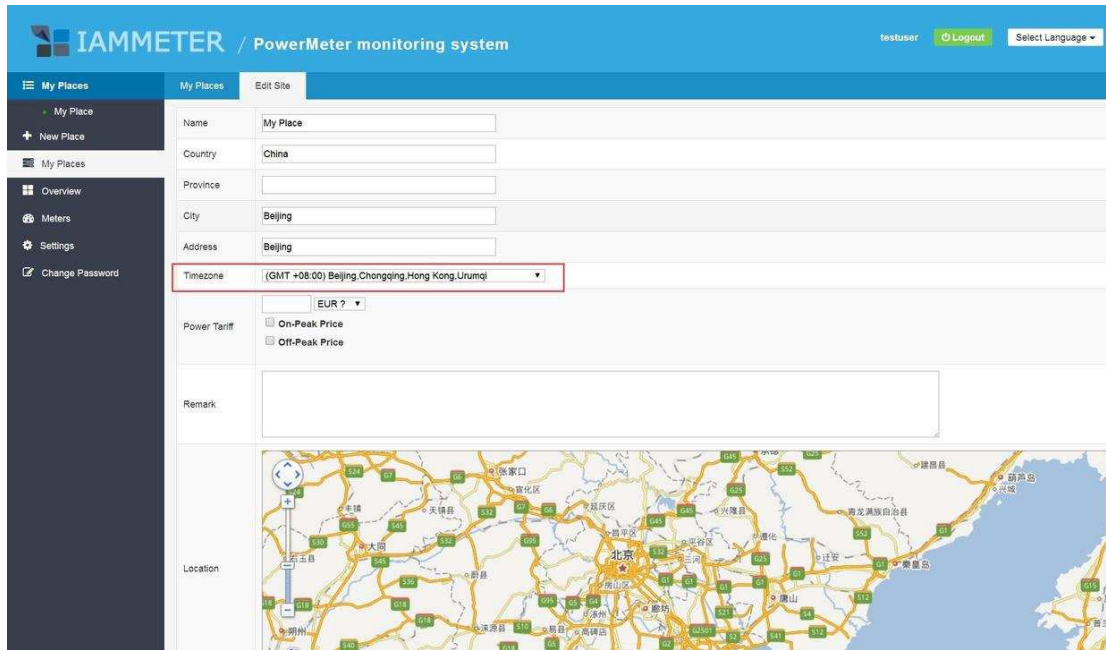
Step2, Click "Sign up", fill up the information on sign up page, enter the iMeter SN.

SN: Serial Number is unique ID of your iMeter, it is a combination of 8 digits or letters. The WiFi network of Monitor shows up as "iMeter_XXXXXXX" and "XXXXXXX" is the SN.

3.2 Set the time zone

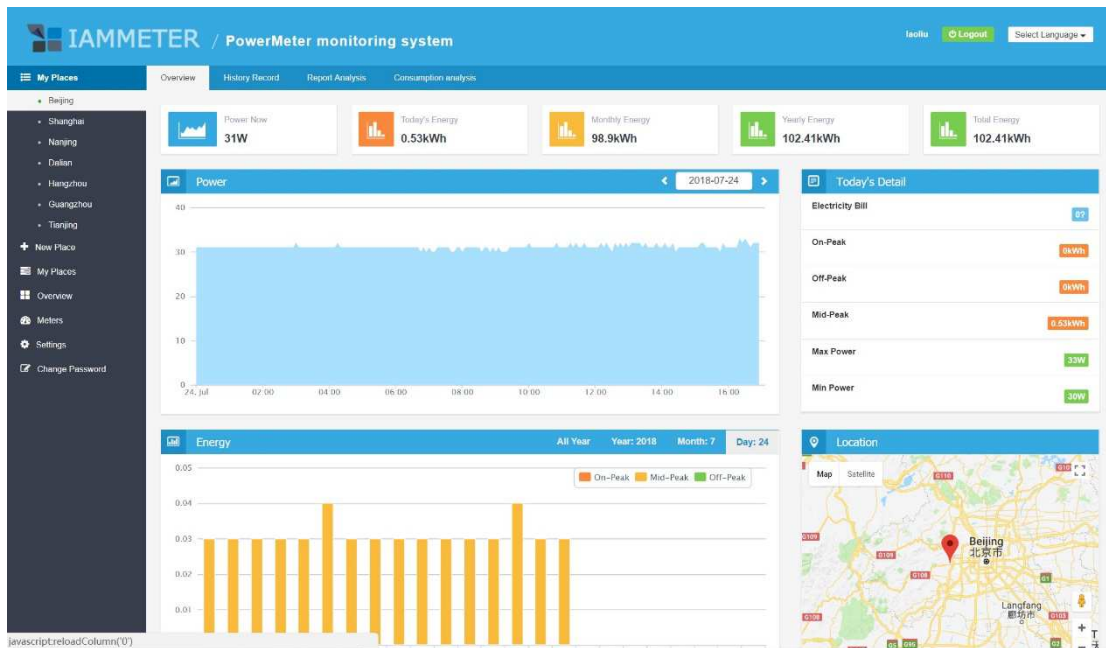
Log into Iammeter, you can see the meter is already added in the system, click "My place" on the left menu bar to set your location and time zone.

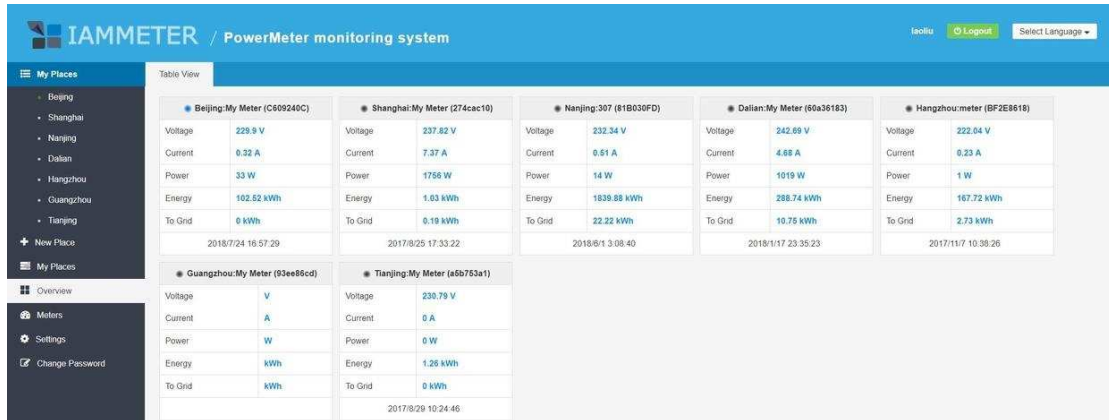
Note: Time zone must be correctly selected, or it will affect the data statistics on time basis.



3.3 View the data

You can view the online data chart and historical report on Iammeter portal.





4. Mobile App

Scan the QRcode to dowload Android/IOS app or search "iammeter" in Google Play or Apple Store.



View your data by mobile app

TEL: +86 010 52981332

Email: support@devicebit.com

Mobile App

