



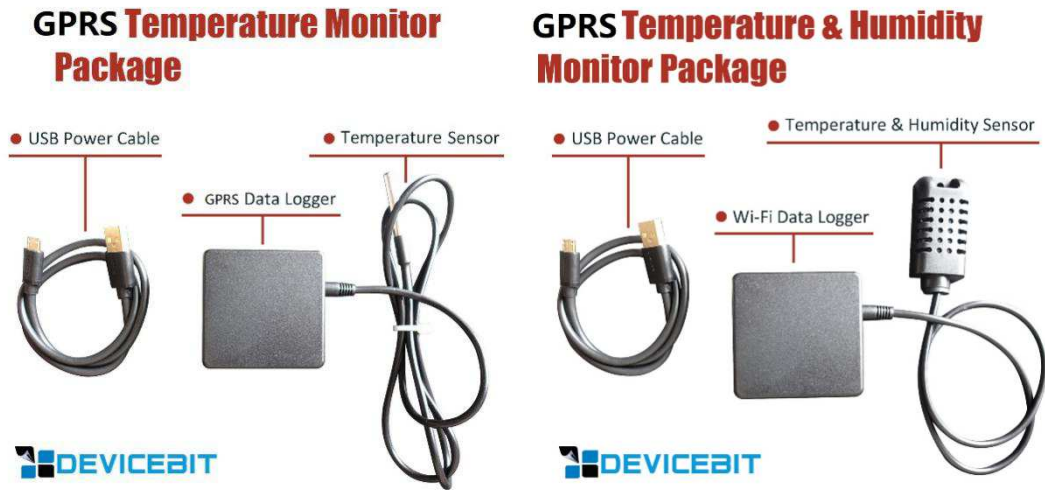
User Manual

GPRS Temperature&Humidity Monitor (GTH202)



OCT, 2017

1. Standard Inclusion



2. Insert the Micro-SIM Card

The Micro SIM card is required for this GPRS Monitor. Open the product case and insert it into the SIM card slot, as the following pictures shows. You may need to use a SIM card holder if necessary. After you inserted the SIM card, then close the product case again.



3 Get the SN

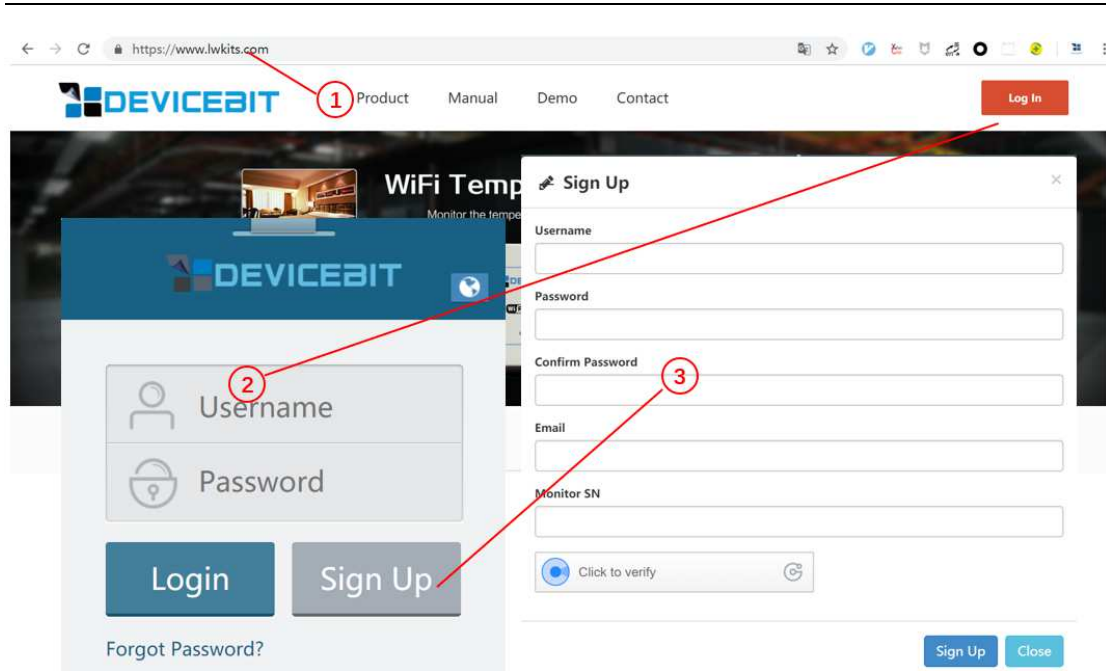
SN: The Serial Number is the unique ID of your eMonitor, it is composed of several digits or letters.

The white label attached to the product case is the SN number, as shown in the picture below. You need to get the Device SN for your later registration on DeviceBit Cloud.



4. Monitor on DeviceBit Cloud

4.1 Sign up

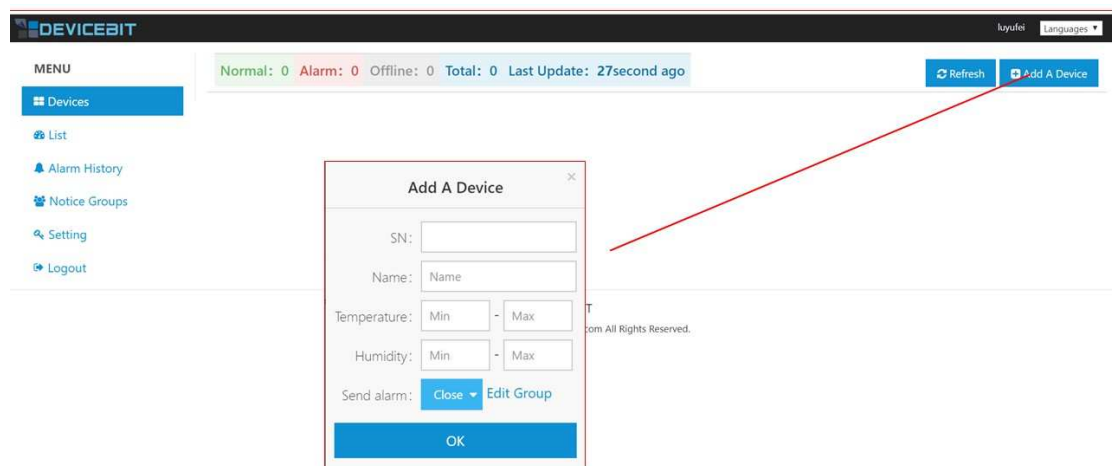


Step1, Visit the dedicated web portal for temperature and humidity monitoring: <https://www.lwkits.com>, click "Log in", and the login page is shown

Step2, Click "Sign up", fill up the information on sign up page, enter the Monitor SN.

SN: Serial Number is unique ID of your Monitor, you can get the SN from the label attached to the product case.

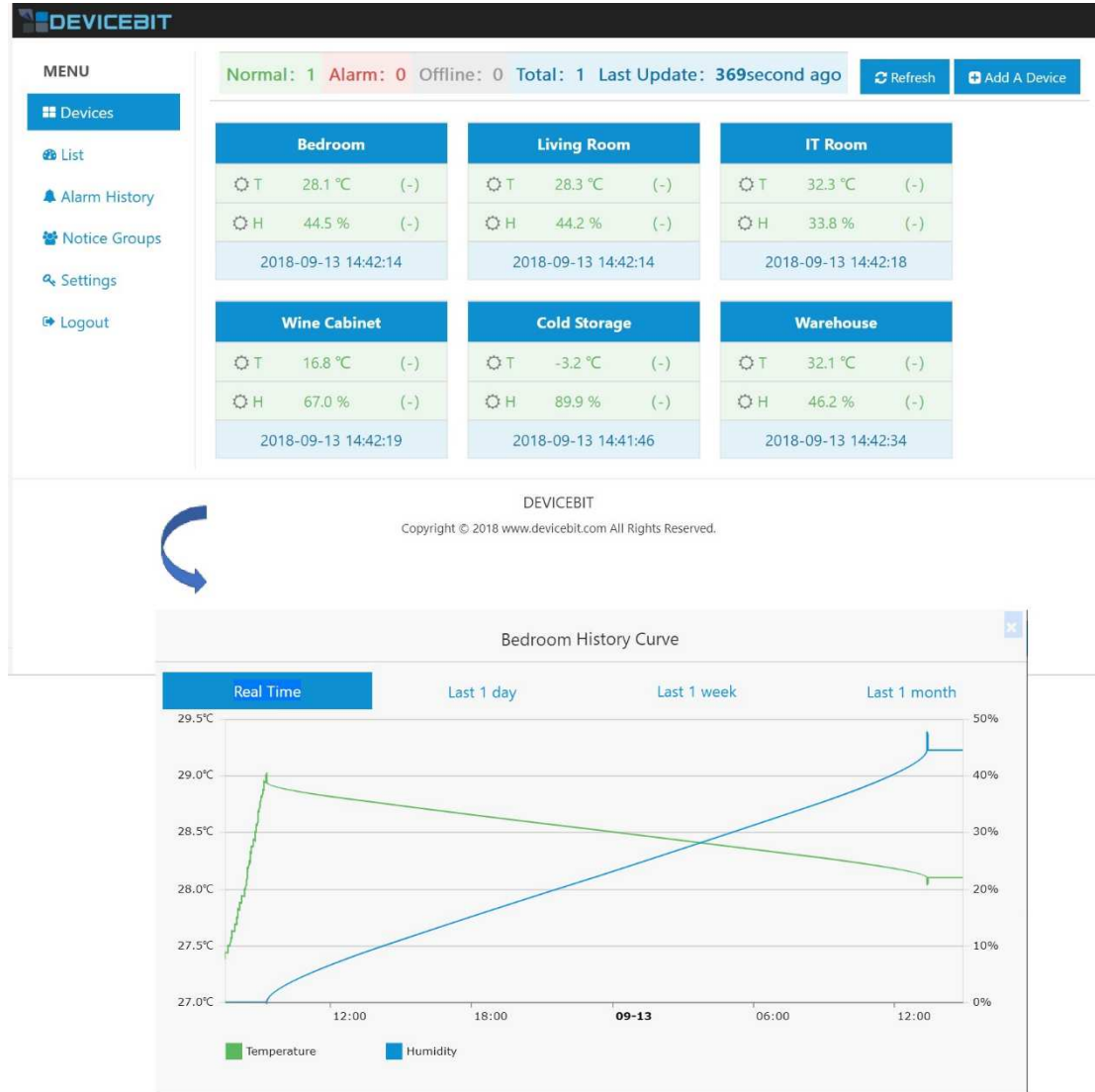
4.2 Add your monitor



Login and click "Add A Device". SN and Name must be filled. Normal Value Range and Alarm Sending is optional to be filled.

3.4 View the data on web portal

After a while, you can view you data on DeviceBit.



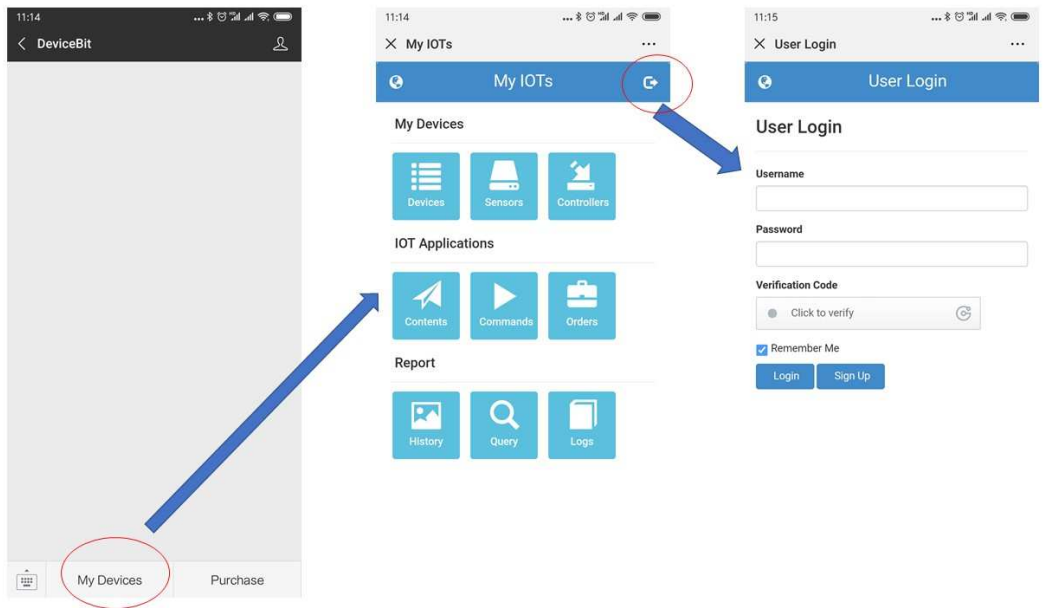
3.5 View the data on WeChat

You can also view data on WeChat by following DeviceBit WeChat ID.

Step1, Scan the below QRcode to follow:



Step2, Login via WeChat by following steps



Step3, View your data on WeChat

